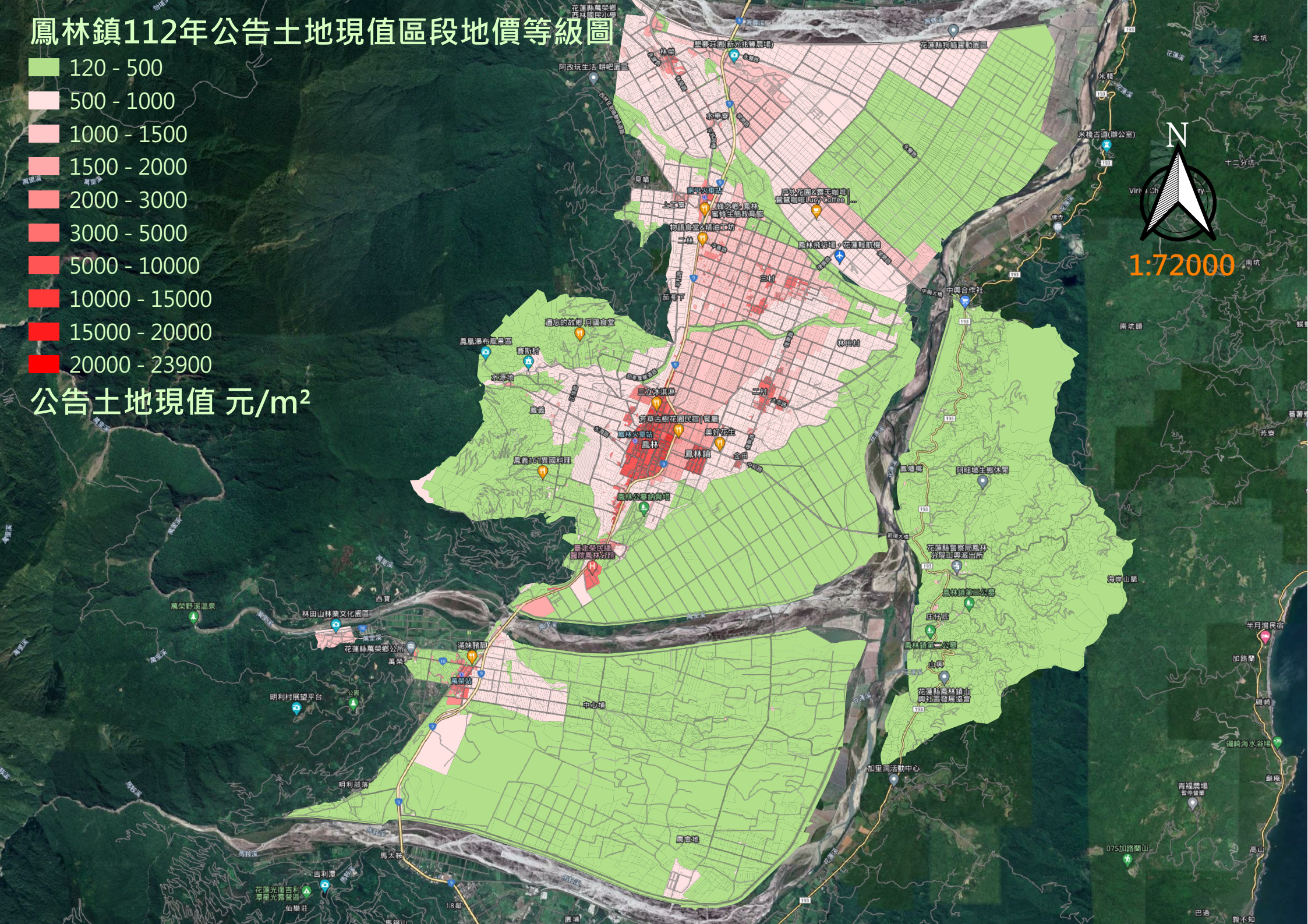


鳳林鎮112年公告土地現值區段地價等級圖

- 120 - 500
- 500 - 1000
- 1000 - 1500
- 1500 - 2000
- 2000 - 3000
- 3000 - 5000
- 5000 - 10000
- 10000 - 15000
- 15000 - 20000
- 20000 - 23900

公告土地現值 元/m²



1:72000